

Realization  
of mechanically  
welded  
sub-assemblies  
and assemblies



## **THE SOLUTION** **IN THE FIELDS OF PUBLIC** **WORKS AGRICULTURAL** **MACHINERY AND HANDLING**



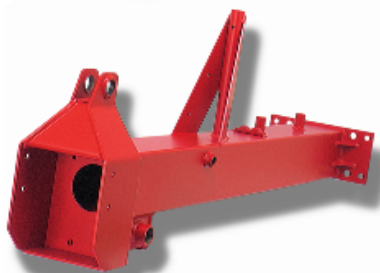
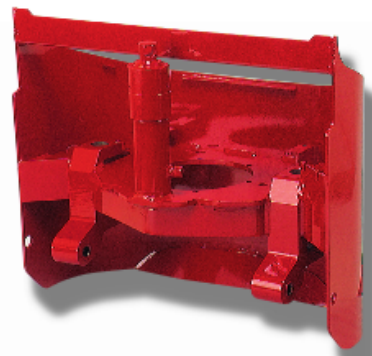
COMEBO Industries is positioned in the field of the realization of medium-thick mechanically welded parts, finished sub-assemblies or finished assemblies, in small an medium-size series.

COMEBO Industries provide performing answers to the realization of :

- all types of chassis,
- tubular frames,
- chassis of vine harvesters.

COMEBO Industries emphasize :

- **Their ability** to provide you with advice and expertise in the elaboration of your projects, thanks to computer-aided design an drawing (2-D and 3-D).
- **Quality**, with two "Bistronic"<sup>™</sup>, the ultimate in terms of rapidity and performance of laser machining of your parts.
- The possibility, according to the nature of requirements, of realizing **the assembly** of sub-assemblies.



- DÉCOUPE LASER
- TÔLERIE INDUSTRIELLE
- MÉCANO-SOUDURE

Clazay

79300 Bressuire - France

Tél. (33) 05 49 65 01 23

Fax (33) 05 49 74 15 46

Email : comebo.industries@wanadoo.fr

For any further information :  
**Phone (33) (0)5 49 65 01 23**  
**Fax (33) (0)5 49 74 15 46**

